

Reporting and Microsoft Office[®] integration for IBM Lotus Notes[®]

Integra4Notes improves your capabilities for data analysis, printing, graphing, mail merge and even data import and export by integrating Lotus Notes with Microsoft Excel[®], Word[®], XML and PDF files.

The Business Need: Developers and end-users of Lotus Notes are constantly seeking a solution to improve the presentation and analysis of their Lotus Notes data. While a simple requirement often exists to push the contents of a few fields in a Notes document into a pre-formatted Office document, more challenging needs revolve around picking fields from multiple Notes views, accessing data from response documents and combining them with information from other databases.

Being able to push data to and from Office, as the tool of choice for the desktop, empowers users with all the capabilities of these tools such as analysis, charting, printing, pivot tables, mail merge etc. In addition, data already held in Word and Excel is often required to be imported into Notes databases in a seamless manner.

The Answer: Integra4Notes. Integra maps the fields in a Notes database with data content and layout defined within Word and Excel templates.

Features and Benefits

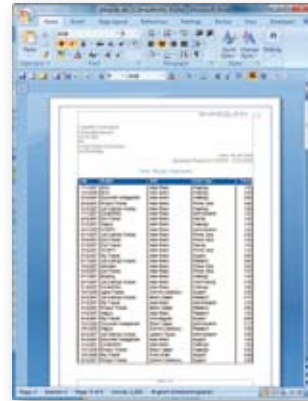
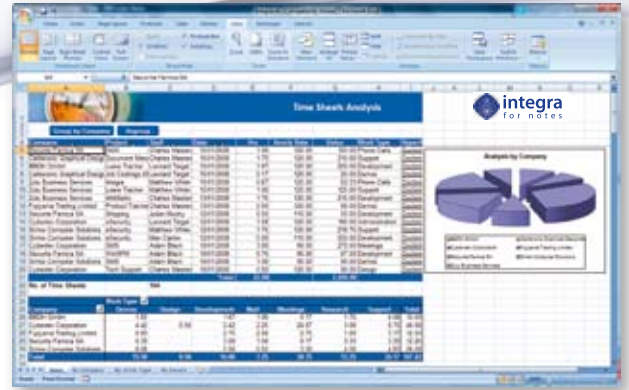
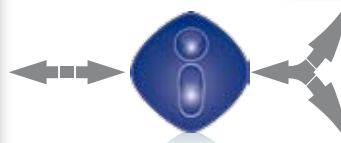
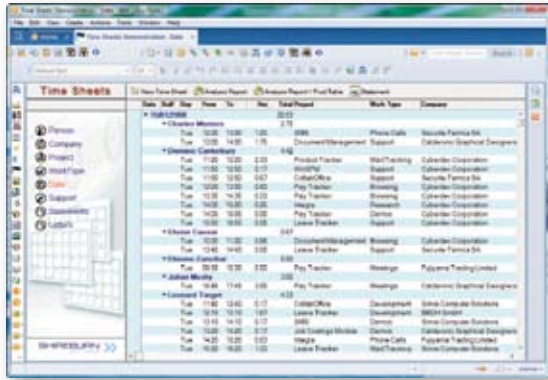
- Productivity: reduce development time for creating high quality output
- Seamlessly exports Lotus Notes data to Word, Excel, PDF and XML
- Improves presentation of Notes data
- Enables dynamic analysis of Notes data using Excel's numerous features
- Supports automated Excel charting, pivot tables, filters, macros etc
- Reporting of Notes Rich-Text data to Microsoft Word output
- Enables mail merging & labels
- Integra events allow most advanced data access, calculation and updating
- Allows usage of LotusScript and Notes formula language without need for agents
- Supports Notes response hierarchies, multi-value fields, sub-forms etc
- Allows collection of data from multiple views, databases and servers as well as back-end databases such as Oracle, SAP, MS-SQL etc
- Enables distribution of reports via e-mail, storage to the file system or as attachments in a Notes document



- Supports usage via Lotus Notes client, web browser as well as scheduled operations
- Controls printing of Notes data with greater accuracy and dependability
- Can also be used to import Word & Excel data into Lotus Notes

Other things you should know about Integra

- Does not require any installation of EXEs or DLLs on workstations
- Removes the need for any changes to the design of the Lotus Notes databases from which you are reporting
- Reduces the need for creating bespoke views in Lotus Notes
- Respects all Lotus Notes security. Users only report on data available to them according to their ACL settings



Zero footprint

All the functionality required by Integra is available within the Lotus Notes Integra database and no EXE's or DLL's are required to be installed on user workstations. No visits to client workstations are required for installation of Integra.

Non-invasive

No design changes are required to be made to the Notes databases whose data is being accessed, eliminating regression testing and security concerns.



Lotus Notes, IBM and the IBM Business Partner logo are all registered trademarks of IBM Corporation. Microsoft Word and Excel are registered trademarks of Microsoft Corporation. Integra for Notes, Integra4Notes and Integra Quick Reports are registered trademarks of Shireburn Software Ltd. All other trademarks are the property of their respective owners. © Shireburn Software Ltd 2008

Execution

Integra profiles are launched directly from the source Notes database from which you are reporting, using various methods:

- **SmartIcon** – clicking the Integra SmartIcon using a Notes client provides a list of reporting profiles available to that user for that database.
- **Action Button** – clicking an Action Button or Hotspot using either a Notes client or a Web Browser.
- **Scheduled** – in accordance with an automated schedule.

Requirements

Integra4Notes requires the use of:

- A Microsoft Windows-based, IBM supported Lotus Notes client 6.0+
- Firefox or Internet Explorer 5.5+
- Integra requires Microsoft supported versions of Word and / or Excel 2000+

Integra can be hosted on all IBM supported Lotus Domino Servers.

Use of scheduling requires a Windows-based Lotus Domino Server or workstation and installation of Word and / or Excel on the server.

Licensing

Integra4Notes is licensed on a per user basis, and is available in 2 versions:

- **Designer Edition** is used to create and edit the Integra profiles that define report content, layout and distribution.
- **End-User Edition** is required to execute Integra profiles.

An annual maintenance and support agreement is available covering e-Support and all product upgrades